

# TAILORART Series

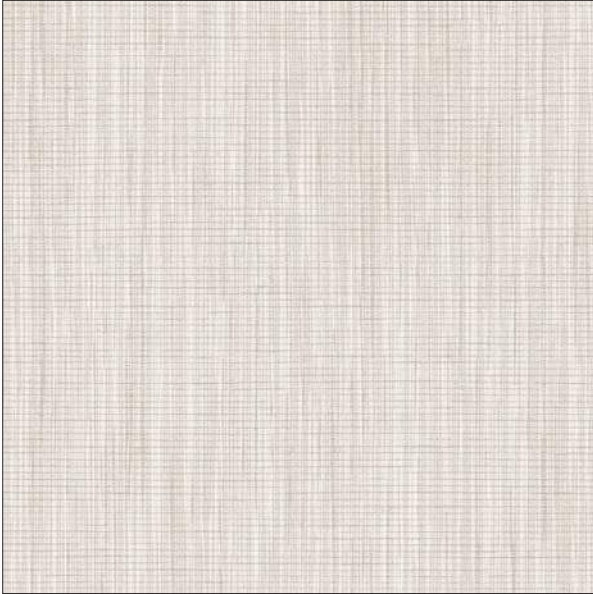
**PORCELAIN**



**olympiatile+stone®**

# Tailorart Series - Coloured Body Porcelain (Rectified)

## LIGHT (White)

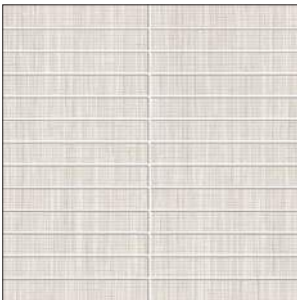


**60 x 60 cm (24" x 24")**  
Code# SO.TA.LHT.2424  
**30 x 60 cm (12" x 24")**  
Code# SO.TA.LHT.1224

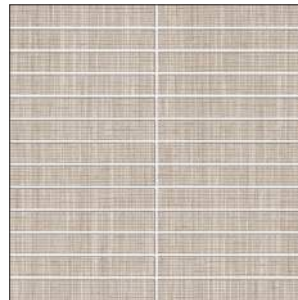
## SAND



**60 x 60 cm (24" x 24")**  
Code# SO.TA.SND.2424  
**30 x 60 cm (12" x 24")**  
Code# SO.TA.SND.1224



**2 x 15 cm (1" x 6")**  
**Mosaic**  
Code# SO.TA.LHT.0106.MOS

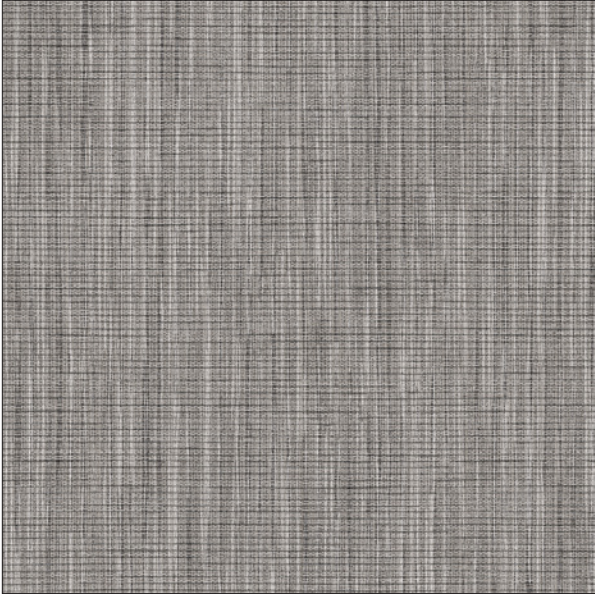


**2 x 15 cm (1" x 6")**  
**Mosaic**  
Code# SO.TA.SND.0106.MOS

**All items shown in this document are part of Olympia's stocking program.** For special orders, please contact your Olympia Tile Sales Representative.

# Tailorart Series - Coloured Body Porcelain (Rectified)

## GREY

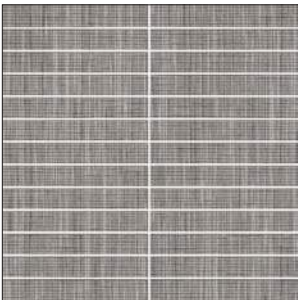


**60 x 60 cm (24" x 24")**  
Code# SO.TA.GRY.2424  
**30 x 60 cm (12" x 24")**  
Code# SO.TA.GRY.1224

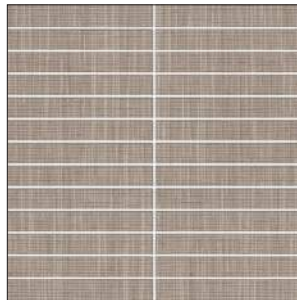
## TAUPE



**60 x 60 cm (24" x 24")**  
Code# SO.TA.TPE.2424  
**30 x 60 cm (12" x 24")**  
Code# SO.TA.TPE.1224



**2 x 15 cm (1" x 6")**  
**Mosaic**  
Code# SO.TA.GRY.0106.MOS

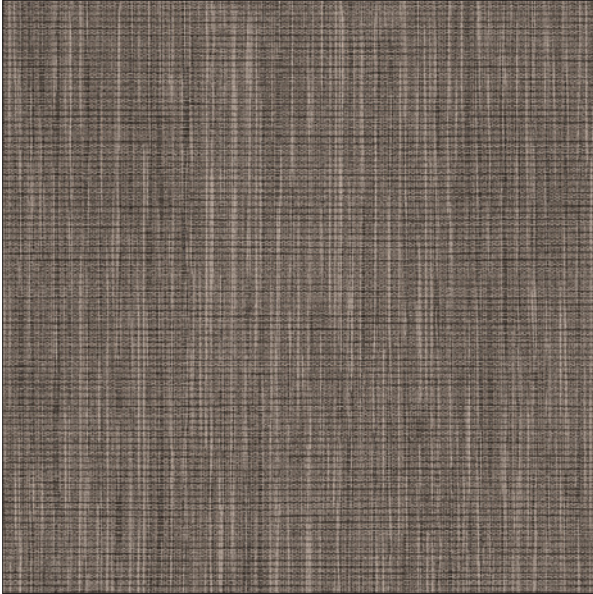


**2 x 15 cm (1" x 6")**  
**Mosaic**  
Code# SO.TA.TPE.0106.MOS

**All items shown in this document are part of Olympia's stocking program.** For special orders, please contact your Olympia Tile Sales Representative.

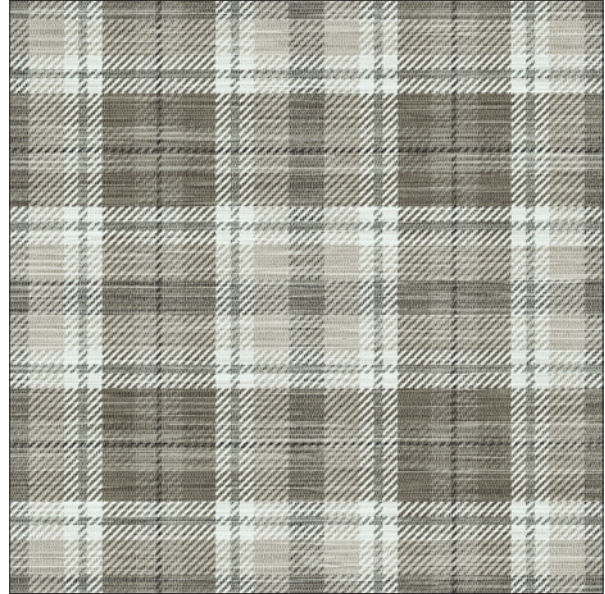
# Tailorart Series - Coloured Body Porcelain (Rectified)

## BROWN

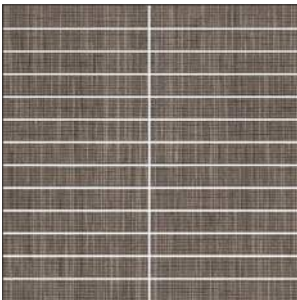


**60 x 60 cm (24" x 24")**  
Code# SO.TA.BWN.2424  
**30 x 60 cm (12" x 24")**  
Code# SO.TA.BWN.1224

## MIX LIGHT DECOR



**60 x 60 cm (24" x 24")**  
Code# SO.TA.MIX.2424.DC



**2 x 15 cm (1" x 6")**  
**Mosaic**  
Code# SO.TA.BWN.0106.MOS

**All items shown in this document are part of Olympia's stocking program.** For special orders, please contact your Olympia Tile Sales Representative.

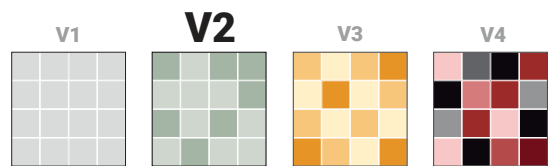
## Tailorart Series

## Tests Performed -- Results Conform

Test	Standard Used	Min. Requirements	Results
Water Absorption	ISO 10545-3	< 0.5%	Conforms
Dynamic C.O.F.	ANSI A137.1-2012	≥ 0.42	Conforms
Slip Resistance	DIN 51130/51097	R-9	Conforms
Modulus of Rupture	ISO 10545-4	> 35N/mm <sup>2</sup>	Conforms
Chemical Resistance	ISO 10545-13	min. UB	Conforms
Frost Resistance	ISO 10545-12	Required	Conforms
Stain Resistance	ISO 10545-14	> Class 3	Conforms

Technical data is supplied by the manufacturer and is subject to change at any time. Olympia does not provide warranties as to the specifications of any product.

## Colour Variation



## Member



Member of Canada Green Building Council



Member of U.S. Green Building Council



The Terrazzo, Tile, and Marble Association of Canada



Ceramic Tile Distributors of America (CTDA)



Marble Institute of America

For information concerning LEED, please contact our Sales Representative

## Examples of Recommended Applications



## Packing Details

TILE SIZE	PC/BOX	SF/BOX	LB/BOX	BOX/PAL
12" x 24"	7	13.56	62.79	32
24" x 24" & 24" x 24" Decor	4	15.50	70.52	30
1" x 6" Mosaic	6	5.81	24.18	60

## Recommended FLEX TILE Installation Systems

For other suitable options & complete installation details, visit [www.flextile.net](http://www.flextile.net)

PRODUCT	WALL APPLICATION		FLOOR APPLICATION	
	Interior	Exterior	Interior	Exterior
<b>TILE BOND COAT</b>	<ul style="list-style-type: none"> <li>• 66 FlexLite</li> <li>• 56SR LHT Mortar</li> </ul>	<ul style="list-style-type: none"> <li>• 5400 Maxi-Flex</li> <li>• 51/44 Latex Mortar System</li> </ul>	<ul style="list-style-type: none"> <li>• 56SR LHT Mortar</li> <li>• 5400 Maxi-Flex</li> </ul>	<ul style="list-style-type: none"> <li>• 5400 Maxi-Flex</li> <li>• 51/44 Latex Mortar System</li> </ul>
<b>GROUT</b>	<ul style="list-style-type: none"> <li>• 500 PM Unsanded</li> <li>• 600 PM Sanded</li> <li>• ColourMax Plus Quartz</li> </ul>	<ul style="list-style-type: none"> <li>• 600 PM Sanded</li> <li>• 1600 RSG Fast Setting</li> </ul>	<ul style="list-style-type: none"> <li>• 600 PM Sanded</li> <li>• FlexEpoxy 100 Epoxy</li> </ul>	<ul style="list-style-type: none"> <li>• 600 PM Sanded</li> <li>• 1600 RSG Fast Set</li> </ul>
<b>CAULKING</b>	Ultra Performance (colour-matched to grout)	Ultra Performance (colour-matched to grout)	Ultra Performance (colour-matched to grout)	Ultra Performance (colour-matched to grout)

### SURFACE PREPARATION (If Required)

- Floor levelling: 59 Flex Flo / 5900 Flex Flo Plus Self Levelling Underlayment
- Waterproofing: WP900 Waterproof Membrane
- Crack Isolation/Uncoupling: Flexilastic 1000 Crack Isolation Membrane / FlexMat Uncoupling Membrane

\* For a complete listing of FLEX TILE products and accessories including Sound Control, In-Floor Heating, and further setting options, please visit [www.flextile.net](http://www.flextile.net)



## “MORE” Surface Care Product Guide

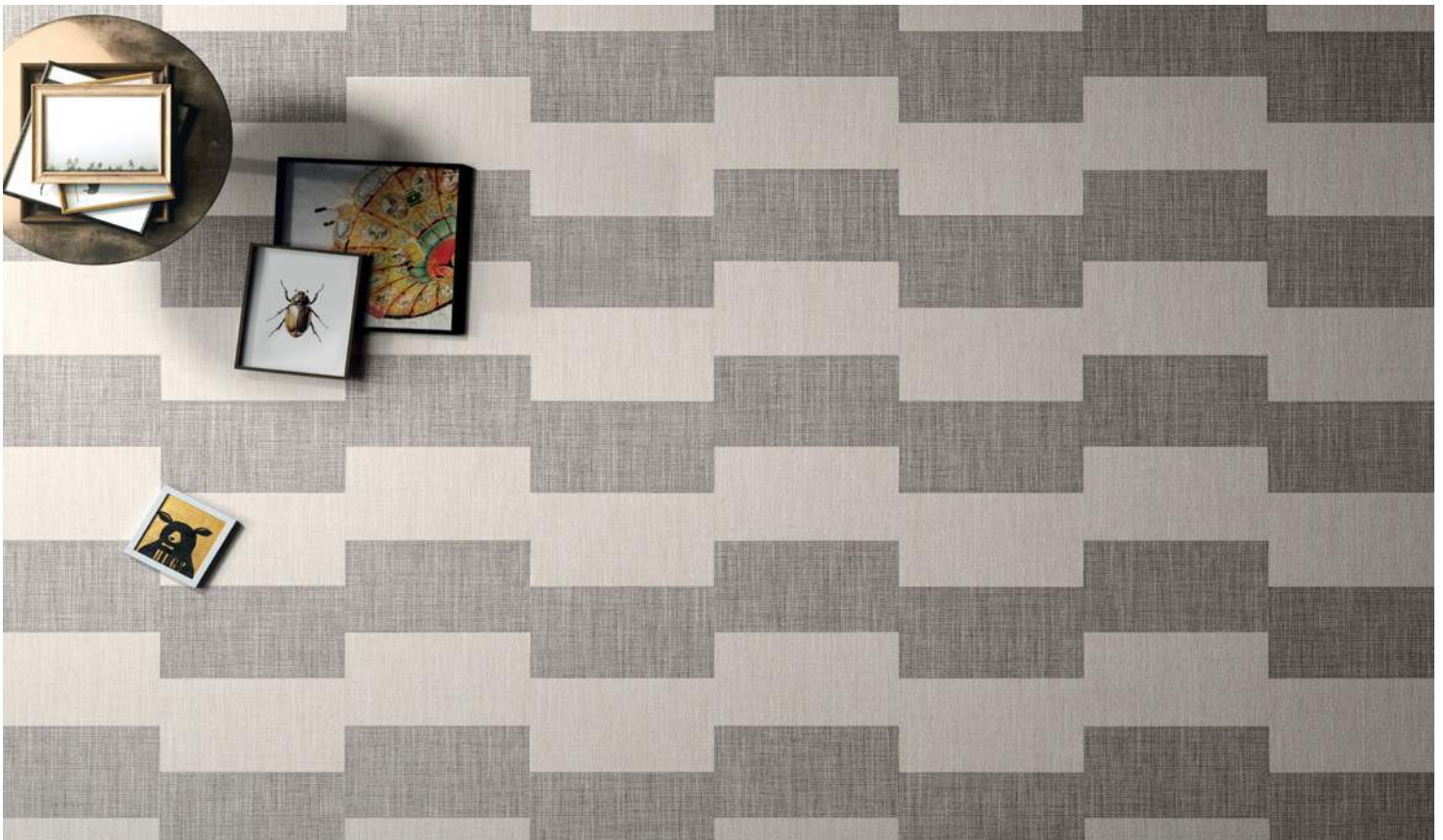
Task	Product Recommendation	Dilution with Water	Frequency
Grout Sealing	MORE™ Grout, Ceramic & Porcelain Sealer	Ready to use	Commercial: 1-3 Years Residential: 5-8 Years
Daily Maintenance	MORE™ Stone and Tile Cleaner	1 : 128 Ratio	Daily
Deep Cleaning	MORE™ Alkaline Cleaner	1 : 4 Ratio	As Needed
Grout Haze- Cementitious	MORE™ Acidic Cleaner	1 : 4 Ratio	As Needed
Grout Haze - Epoxy / Urethane	MORE™ Coating Stripper*	Ready to use	As Needed

\* Always test in an inconspicuous area to make sure the product is achieving the desired results and is not damaging the finish of the surface.





**GREY & BROWN**



**LIGHT (White) & GREY**

# Tailorart Series: Board MEF-141 / Folder FL-743



Colour may vary slightly from images shown. It is highly recommended to view physical samples of tile prior to purchase. Note that shade variations between tiles is characteristic and adds to the inherent beauty of the product. Please visit a showroom near you or request a sample from your Olympia Tile Sales Representative.

It is Olympia Tile's policy to stock all items for sale. Should you require additional sizes, finishes or colours, Olympia has a Special Order Department to help find exactly what you are looking for. Please contact your Olympia Tile Sales Representative for more details. Note that minimum order quantities and longer lead times apply to all special order items.

## the olympiatile+stone® group

### OLYMPIA TILE + STONE INTERNATIONAL INC.

#### CORPORATE OFFICE AND SHOWROOM TORONTO

1000 Lawrence Ave. West  
Ontario M6A 1C6  
T: 416 785 6666  
Toll Free: 1 800 268 1613  
F: 416 785 9682

#### VAUGHAN

100A Royal Group Crescent  
Ontario L4H 1X9  
T: 905 266 0420  
F: 905 266 0423

#### VANCOUVER

2350 Willingdon Ave.  
Burnaby  
British Columbia V5C 5J6  
T: 604 294 2244  
Toll Free: 1 800 663 9441  
F: 604 294 0528

#### CALGARY

3308 - 11th Street S.E.  
Alberta T2G 3G8  
T: 403 287 1070  
Toll Free: 1 800 322 8182  
F: 403 243 1888

#### EDMONTON

11540 - 163rd Street  
Alberta T5M 3T3  
T: 780 452 5050  
Toll Free: 1 800 619 4438  
F: 780 451 4391

#### WINNIPEG

560 Sheppard Street  
Manitoba R2X 2P8  
T: 204 633 5736  
Toll Free: 1 800 665 8017  
F: 204 632 4644

#### WINDSOR

4145 7th Concession Rd  
Ontario N9A 6J3  
T: 519 966 2500  
Toll Free: 1 877 410 5953  
F: 519 969 2407

#### LONDON

234 Exeter Road  
Ontario N6L 1A3  
T: 519 652 5011  
Toll Free: 1 800 265 4690  
F: 519 652 5021

#### HAMILTON

75 Milburn Road  
Ontario L8E 3A3  
T: 905 560 5520  
Toll Free: 1 800 263 1370  
F: 905 578 3593

#### OTTAWA

2480 Don Reid Drive  
Ontario K1H 1E1  
T: 613 736 9570  
Toll Free: 1 800 267 1864  
F: 613 736 9563

#### MONTREAL

555 rue Locke  
Ville St-Laurent,  
Quebec H4T 1X7  
T: 514 345 8666  
Toll Free: 1 800 361 1954  
F: 514 345 8825

#### QUEBEC

2405 rue Watt  
Quebec G1P 3X2  
T: 418 657 5557  
Toll Free: 1 800 463 5516  
F: 418 657 6708

#### HALIFAX

55 Akerley Boulevard  
Dartmouth, Nova Scotia  
B3B 1M3  
T: 902 468 9260  
Toll Free: 1 800 565 7790  
F: 902 468 0011

#### SLAB DIVISION

##### TORONTO

22 Dufflaw Road  
Toronto, Ontario M6A 2W1  
T: 416 785 9555 ext 320  
F: 416 781 4521

##### VAUGHAN

100A Royal Group Crescent  
Vaughan, Ontario L4H 1X9  
T: 905 266 0420  
F: 905 266 0423

### OLYMPIA TILE (USA), INC.

#### CORPORATE OFFICE

701 Berkshire Lane North  
Minneapolis (Plymouth)  
Minnesota 55441  
T: 763 545 5455  
F: 763 542 9830

#### FLORIDA

**ALPHA TILE & STONE**  
2443 East Meadow Blvd.  
Tampa, Florida 33619  
T: 813 620 9000  
Toll Free: 1 800 785 9000  
F: 813 621 0606

#### 10898-A Metro Parkway

**Fort Myers**, Florida 33966  
T: 239 275 8288  
Toll Free: 1 800 785 8288  
F: 239 275 0116

#### 2603 Ace Road

**Orlando**, Florida 32804  
T: 407 293 3993  
Toll Free: 1 800 785 3993  
F: 407 293 1779

#### 1808 Whitfield Ave.

**Sarasota**, Florida 34243  
T: 941 727 7433  
Toll Free: 1 800 785 3484  
F: 941 727 7381

#### IOWA

**KATE-LO TILE & STONE**  
4251 N.W. Urbandale Dr.  
**Des Moines (Urbandale)**  
Iowa 50322  
T: 515 270 4920  
Toll Free: 1 800 320 1387  
F: 515 270 7035

#### NORTH DAKOTA

**KATE-LO TILE & STONE**  
Resource Centre  
300 Northern Pacific Ave.  
Suite 106  
**Fargo**, North Dakota 58102  
T: 701 478 8087  
F: 701 478 8084

#### MICHIGAN

**BEAVER TILE & STONE**  
24700 Drake Rd.  
**Detroit West (Farmington Hills)**  
Michigan 48335  
T: 248 476 2333  
Toll Free: 1 800 825 0551  
F: 248 476 4636

1700 Stutz Dr., Suite 101  
**Detroit North (Troy)**  
Michigan 48084  
T: 248 649 5552  
F: 248 649 0741

#### 2780 Enterprise Ct.

**Saginaw**, Michigan 48603  
T: 989 790 5851  
Toll Free: 1 800 797 0897  
F: 989 790 0311

#### 13085 23 Mile Rd.

**Detroit East (Shelby Township)**  
Michigan 48315  
T: 586 991 0780  
Toll Free: 1 800 889 5395  
F: 586 991 0784

#### 1694 Gezon Parkway

**Grand Rapids (Wyoming)**  
Michigan 49509  
T: 616 534 2883  
Toll Free: 1 800 797 0727  
F: 616 534 4784

#### MINNESOTA

**KATE-LO TILE & STONE**  
701 Berkshire Lane North  
**Minneapolis (Plymouth)**  
Minnesota 55441  
T: 763 545 5455  
Toll Free: 1 800 288 3026  
F: 763 542 9830

#### NEBRASKA

**KATE-LO TILE & STONE**  
13211 Chandler Road  
Suite 400  
**Omaha (La Vista)**  
Nebraska 68138-3703  
T: 402 614 9010  
Toll Free: 1 877 687 6636  
F: 402 614 0989

#### NEW JERSEY

**NEW JERSEY TILE & STONE**  
70 Newfield Avenue  
Raritan Center,  
**Edison**  
New Jersey 08837  
T: 732 512 1818  
Toll Free: 1 800 513 8453  
F: 732 512 1881

#### NEW YORK

**DOBKIN TILE & STONE**  
51 Benbro Drive  
**Buffalo (Cheektowaga)**  
New York 14225  
T: 716 684 1200  
Toll Free: 1 800 759 1414  
F: 716 684 1294

#### 48 Railroad Avenue

**Albany (Colonie)**  
New York 12205  
T: 518 489 6803  
Toll Free: 1 800 678 5769  
F: 518 489 6806

#### OREGON

**THOMPSON TILE & STONE**  
4472 NW Yeon Avenue  
**Portland**  
Oregon 97210  
T: 503 225 1273  
Toll Free: 1 800 827 4092  
F: 503 222 0731

#### WISCONSIN

**LEXCO TILE & STONE**  
1616 S. 108th Street  
**Milwaukee**  
Wisconsin 53214  
T: 414 771 2900  
Toll Free: 1 800-242-2249  
F: 414 771 9153

#### WASHINGTON

**THOMPSON TILE & STONE**  
3900 East Alki  
**Spokane**  
Washington 99208  
T: 509 535 2925  
Toll Free: 1 800 827 2555  
F: 509 534 5218

#### 711 S. Fidalgo Street

**Seattle**  
Washington 98108  
T: 206 900 7331  
Toll Free: 1 800 827 4093  
F: 206 294 5933

#### 575 Strander Blvd.

**Tukwila**  
Washington 98188  
T: 206 575 7976  
F: 206 575 7484

**FLEXITILE LTD.**   
**MANUFACTURING PLANTS**  
[www.flexitile.net](http://www.flexitile.net)

#### TORONTO

121 30th Street | Toronto | Ontario | M8W 3C1  
T: 416 255-1111 | Toll Free: 1 800 699 3623 | F: 416 255-1729

#### VANCOUVER

2969 Lake City Way | Burnaby | British Columbia | V5A 2Z6  
T: 604 420-4914 | Toll Free: 1 888 236 4486 | F: 604 420-0936

All sales and transactions are subject to our terms and conditions of sale, available on our website.

**olympiatile+stone®**

