

CHIMEWOOD

The Chimewood Collection is our signature luxury SPC vinyl tile flooring that features authentic design, natural color, and realistic texture that recreates the beauty of real hardwood.



SPC/VINYL FLOORING

CHIMEWOOD

SPC/VINYL FLOORING

olympiatile+stone 

www.olympiatile.com

7" X 48" Matte



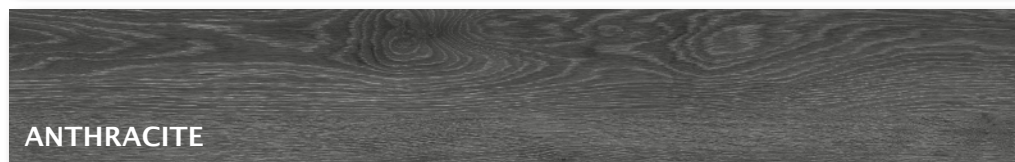
ALMOND

HV.CW.ALM.0748

(Without Underpad)

HV.CW.ALM.0748.PAD

(With Underpad)



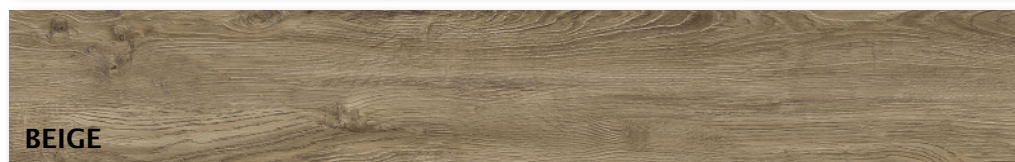
ANTHRACITE

HV.CW.ATR.0748

(Without Underpad)

HV.CW.ATR.0748.PAD

(With Underpad)



BEIGE

HV.CW.BGE.0748

(Without Underpad)

HV.CW.BGE.0748.PAD

(With Underpad)



BONE

HV.CW.BON.0748

(Without Underpad)

HV.CW.BON.0748.PAD

(With Underpad)



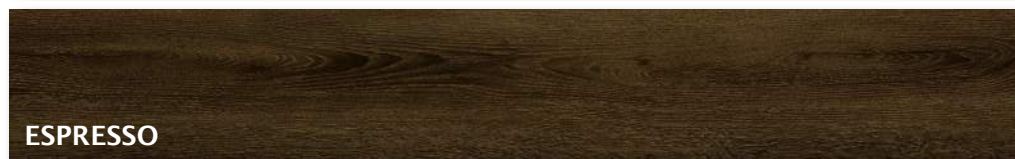
BROWN

HV.CW.BWN.0748

(Without Underpad)

HV.CW.BWN.0748.PAD

(With Underpad)



ESPRESSO

HV.CW.EXP.0748

(Without Underpad)

HV.CW.EXP.0748.PAD

(With Underpad)



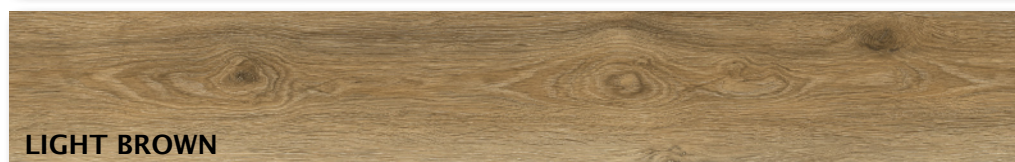
ICE

HV.CW.ICE.0748

(Without Underpad)

HV.CW.ICE.0748.PAD

(With Underpad)



LIGHT BROWN

HV.CW.LBW.0748

(Without Underpad)

HV.CW.LBW.0748.PAD

(With Underpad)

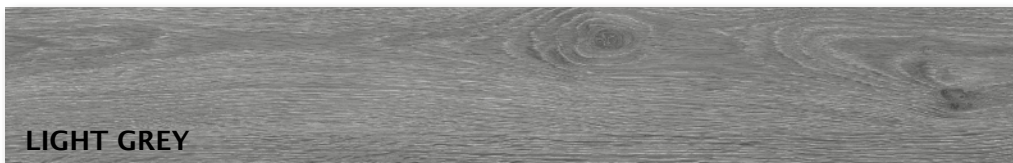
CHIMEWOOD

SPC/VINYL FLOORING

olympiatile+stone

www.olympiatile.com

7" X 48" Matte



LIGHT GREY

HV.CW.LGR.0748

(Without Underpad)

HV.CW.LGR.0748.PAD

(With Underpad)



LIGHT TAUPE

HV.CW.LTP.0748

(Without Underpad)

HV.CW.LTP.0748.PAD

(With Underpad)



SILVER

HV.CW.SIL.0748

(Without Underpad)

HV.CW.SIL.0748.PAD

(With Underpad)



TAN

HV.CW.TAN.0748

(Without Underpad)

HV.CW.TAN.0748.PAD

(With Underpad)



TAUPE

HV.CW.TPE.0748

(Without Underpad)

HV.CW.TPE.0748.PAD

(With Underpad)

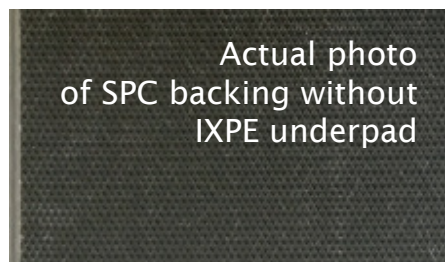
Packing Details (Sold per BOX)

TILE SIZE	PC/BOX	SF/BOX	LB/BOX	BOX/PAL	SF/PALLET
7" x 48"	11	26.19	44.11	55	1,440.45sf

- Chimewood's stone plastic composite core resists indentations and eliminates telegraphing for all Home, Office & Commercial settings.

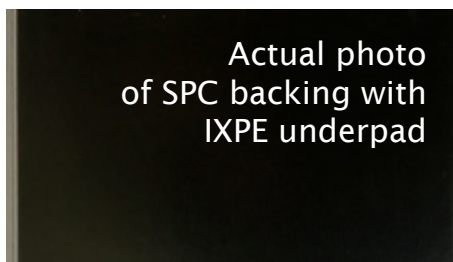
- Chimewood is Floorscore certified for low VOC providing an environmentally friendly option for flooring applications both commercial & residential.

- Chimewood features a unilin clickhinge to ensure a seamless water proof installation.



Actual photo
of SPC backing without
IXPE underpad

Thickness: 4mm



Actual photo
of SPC backing with
IXPE underpad

Thickness: 5mm

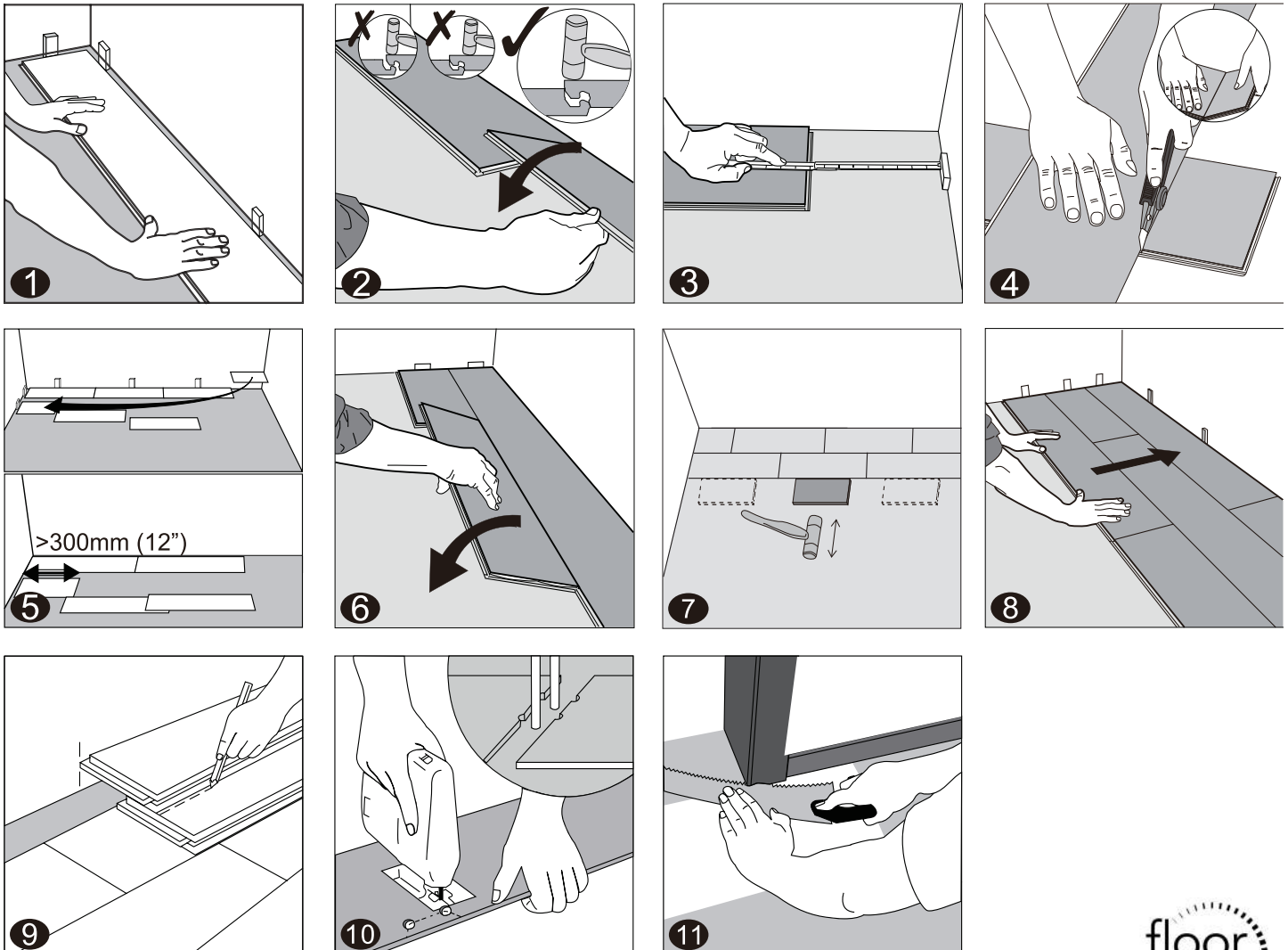
*Please check with your
local sales rep for SPC
Glue Down Options.*

CHIMEWOOD

SPC/VINYL FLOORING

olympiatile+stone

www.olympiatile.com



MAINTENANCE + INSTALLATION GUIDELINES

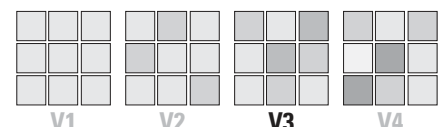
Available upon request.

TECHNICAL

RESULTS CONFORM

- 4mm Thick, 7" x 48" Without IXPE Underpad
- 5mm Thick, 7" x 48" With IXPE Underpad
- 20ml (.5mm) Wearlayer Double UV Coating
- Installs Over Existing Hard Surface Flooring
- 2,000 + kg/m density core

SHADE VARIATION



V3 Moderate Variation

Plymouth, MN | 763.545.5455 ♦ 800.288.3026
Des Moines, IA | 515.270.4920 ♦ 800.320.1387
Omaha, NE | 402.614.9010 ♦ 877.687.6636
katelotile.com

kate-lotile & stone

a division of olympia tile (usa), inc.