

# CANOVA

pietre & marmi



# CONTENTS

---

## CANOVA



EMPERADOR.....	08
STATUARIO.....	14
ARABESCATO.....	22
LASA WHITE.....	28
CARNICO.....	34
OXFORD GREY.....	40

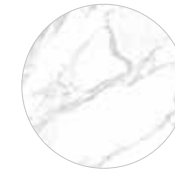
---

## APPENDIX

TECHNICAL SHEET.....	46
----------------------	----



EMPERADOR



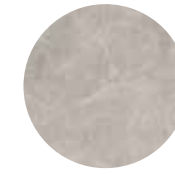
STATUARIO



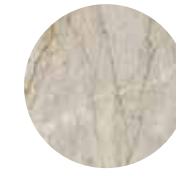
ARABESCATO



LASA WHITE



CARNICO



OXFORD GREY

“ Canova è un progetto ceramico che risponde alle rinnovate richieste del mercato che vede nella "tendenza marmo" la possibilità concreta di tracciare nuovi orizzonti stilistici. Il marmo è il materiale che più riporta alla mente i fasti della classicità. Ed è proprio questo lo spirito che abbiamo voluto reinterpretare in chiave moderna con la nuova collezione in gres porcellanato effetto marmo. ”

*Canova is the ceramic project to respond at the new demands of the market, that leads the "marble trend" to the concrete possibility of tracing new stylistic horizons. Marble is one of the materials that reminds us the glories of ancient classicism. Through this new collection, we wanted to reinterpret in a modern key the marble-effect porcelain stoneware.*

*Canova est un projet de céramique qui répond aux nouvelles exigences du marché et qui voit dans la "tendance du marbre" la possibilité concrète de tracer de nouveaux horizons stylistiques. Le marbre est un matériau qui rappelle au mieux aux gloires du classicisme. C'est précisément cet esprit que nous avons voulu réinterpréter de façon moderne en utilisant la nouvelle collection en grès cérame effet marbre.*

*Canova ist ein Keramikprojekt, das auf die erneuerten Anforderungen des Markts reagiert. Diese Serie sieht im "Marmortrend" die konkrete Möglichkeit, um neue stilistische Horizonte zu erschließen. Marmor ist das Material, das am meisten die Herrlichkeit des Klassizismus erinnert. Mit dieser neuer Kollektion wollten wir den Marmor in einem modernen Stil wieder interpretieren.*



**GRES PORCELLANATO A IMPASTO COLORATO**  
 FULL BODY PORCELAIN STONEWARE  
 GRES CERAME A PATE COLOREE  
 DURCHGEFÄRBTES FEINSTEINZEUG

9,5 mm  
 RETTIFICATO  
 RECTIFIED

NATURALE / NATURAL  
 FULL LAPPATO / POLISHED



60x120  
 24"x48"



60x60  
 24"x24"



30x60  
 12"x24"

**Canova**  
The colors





Canova  
Emperador



wall  
Canova - Emperador 60x60





wall  
Canova - Emperador 60x60

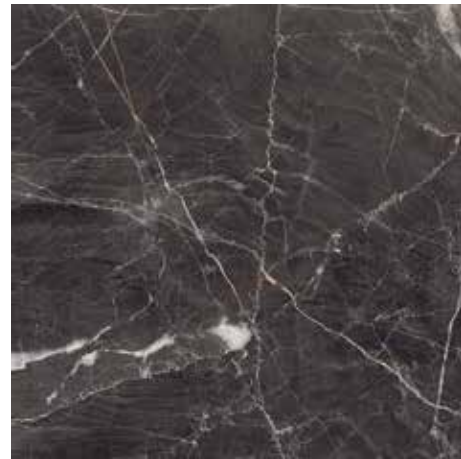
floor  
Canova - Emperador - Polished 60x120





**J88478**  
60x120 (24"x48") rett./rect.

**J88518 FULL LAPPATO / POLISHED**  
60x120 (24"x48") rett./rect.



**J88494**  
60x60 (24"x24") rett./rect.

**J88888 FULL LAPPATO / POLISHED**  
60x60 (24"x24") rett./rect.



**J88510**  
30x60 (12"x24") rett./rect.

**J88894 FULL LAPPATO / POLISHED**  
30x60 (12"x24") rett./rect.



**18** 60X120

GRAFICHE DIVERSE  
DIFFERENT PATTERNS  
DIFFÉRENTS MOTIFS  
VERSCHIEDENE MUSTER

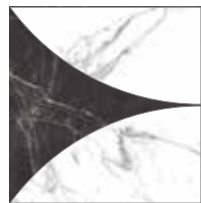
**36** 60X60

GRAFICHE DIVERSE  
DIFFERENT PATTERNS  
DIFFÉRENTS MOTIFS  
VERSCHIEDENE MUSTER

**72** 30X60

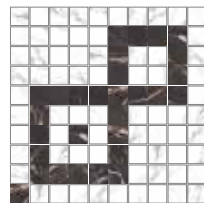
GRAFICHE DIVERSE  
DIFFERENT PATTERNS  
DIFFÉRENTS MOTIFS  
VERSCHIEDENE MUSTER

B&W PRESTIGE



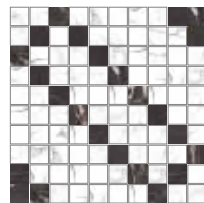
**J88565 FULL LAPPATO / POLISHED**  
30x30 (12"x12")

B&W 01



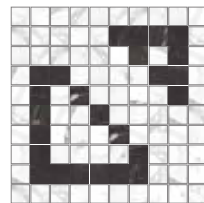
**J88566 FULL LAPPATO / POLISHED**  
30x30 (12"x12")

B&W 02



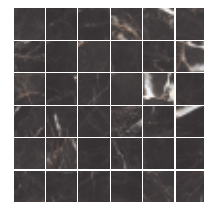
**J88567 FULL LAPPATO / POLISHED**  
30x30 (12"x12")

B&W 03



**J88568 FULL LAPPATO / POLISHED**  
30x30 (12"x12")

MOSAICO



**J88573**  
30x30 (12"x12")

ESAGONA



**J88578 FULL LAPPATO / POLISHED**  
35x30,3 (14"x12")



Canova  
Statuario



wall  
Canova - Statuario - Polished 60x60  
Canova - B&W Prestige - Polished 30x30





wall  
Canova - Statuario - Polished 60x120  
Canova - B&W Prestige - Polished 30x30

floor  
Canova - Statuario 60x120  
Canova - Statuario - Mosaico 30x30



**J88474**  
60x120 (24"x48") rett./rect.

**J88514 FULL LAPPATO / POLISHED**  
60x120 (24"x48") rett./rect.



**J88490**  
60x60 (24"x24") rett./rect.

**J88891 FULL LAPPATO / POLISHED**  
60x60 (24"x24") rett./rect.



**J88506**  
30x60 (12"x24") rett./rect.

**J88897 FULL LAPPATO / POLISHED**  
30x60 (12"x24") rett./rect.



**18** 60X120

GRAFICHE DIVERSE  
DIFFERENT PATTERNS  
DIFFÉRENTS MOTIFS  
VERSCHIEDENE MUSTER

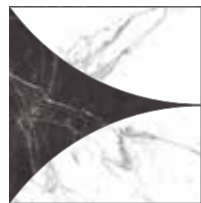
**36** 60X60

GRAFICHE DIVERSE  
DIFFERENT PATTERNS  
DIFFÉRENTS MOTIFS  
VERSCHIEDENE MUSTER

**72** 30X60

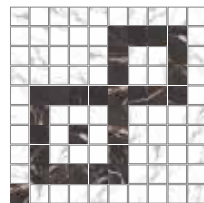
GRAFICHE DIVERSE  
DIFFERENT PATTERNS  
DIFFÉRENTS MOTIFS  
VERSCHIEDENE MUSTER

B&W PRESTIGE



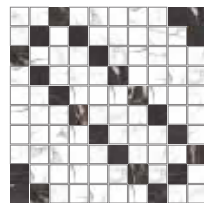
**J88565 FULL LAPPATO / POLISHED**  
30x30 (12"x12")

B&W 01



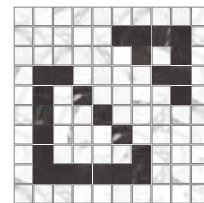
**J88566 FULL LAPPATO / POLISHED**  
30x30 (12"x12")

B&W 02



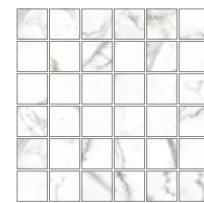
**J88567 FULL LAPPATO / POLISHED**  
30x30 (12"x12")

B&W 03



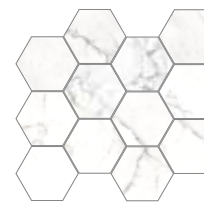
**J88568 FULL LAPPATO / POLISHED**  
30x30 (12"x12")

MOSAICO



**J88569**  
30x30 (12"x12")

ESAGONA



**J88574 FULL LAPPATO / POLISHED**  
35x30,3 (14"x12")

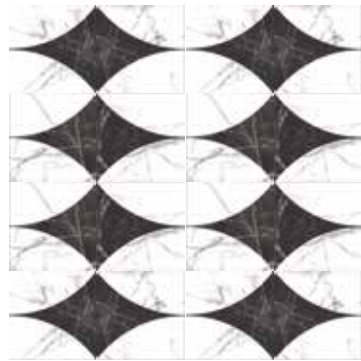


B&W PRESTIGE

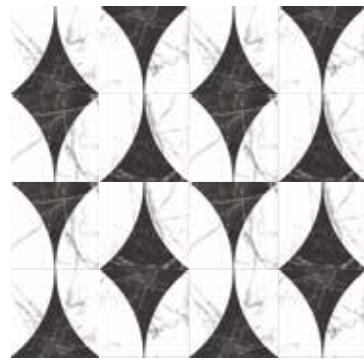


J88565 FULL LAPPATO / POLISHED  
30x30 (12"x12")

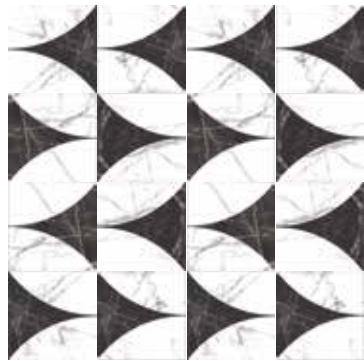
SOLUTION A



SOLUTION B



SOLUTION C

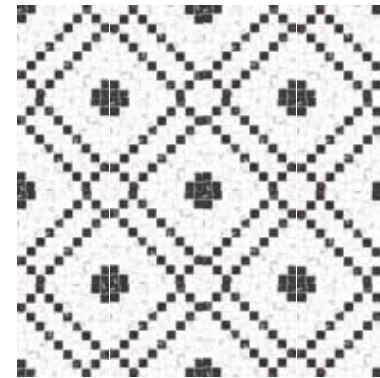


MOSAICO B&W 02

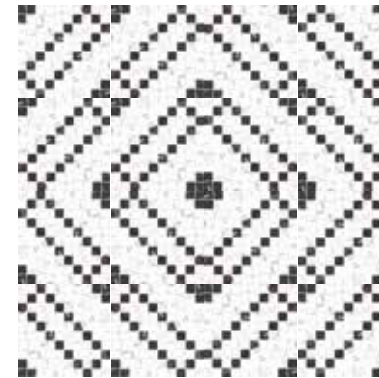


J88567 FULL LAPPATO / POLISHED  
30x30 (12"x12")

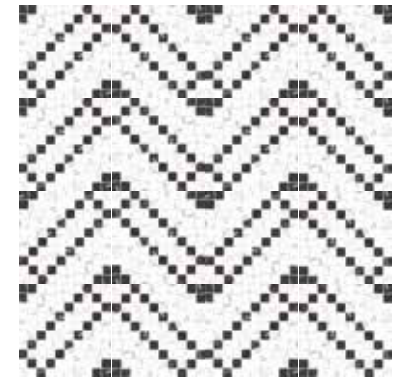
SOLUTION A



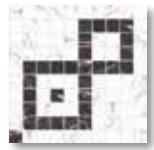
SOLUTION B



SOLUTION C

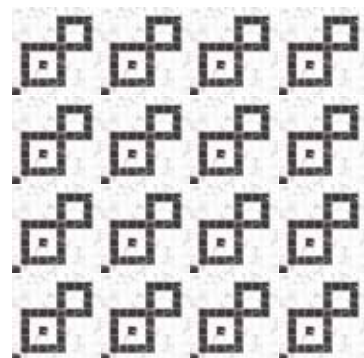


MOSAICO B&W 01

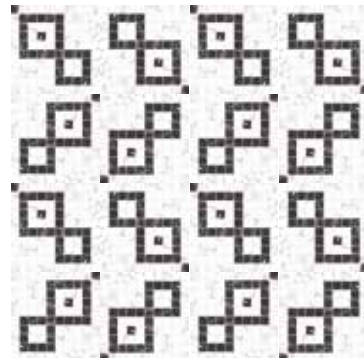


J88566 FULL LAPPATO / POLISHED  
30x30 (12"x12")

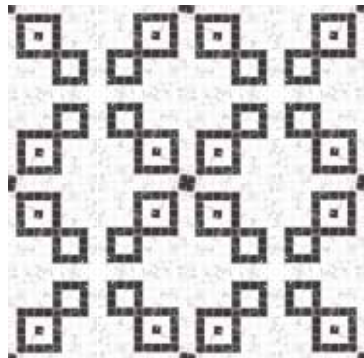
SOLUTION A



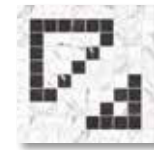
SOLUTION B



SOLUTION C

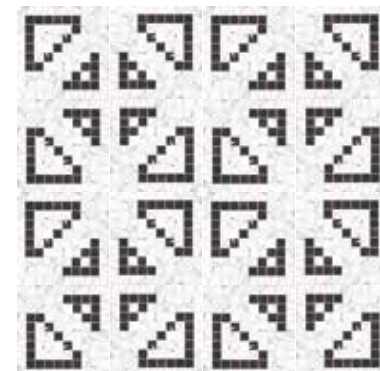


MOSAICO B&W 03

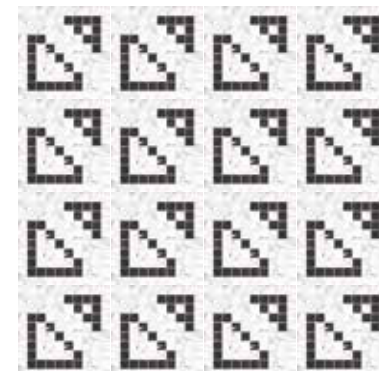


J88568 FULL LAPPATO / POLISHED  
30x30 (12"x12")

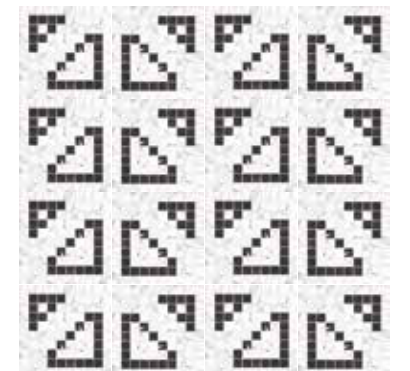
SOLUTION A



SOLUTION B



SOLUTION C



Canova  
Arabescato



floor  
Canova - Arabescato 60x60





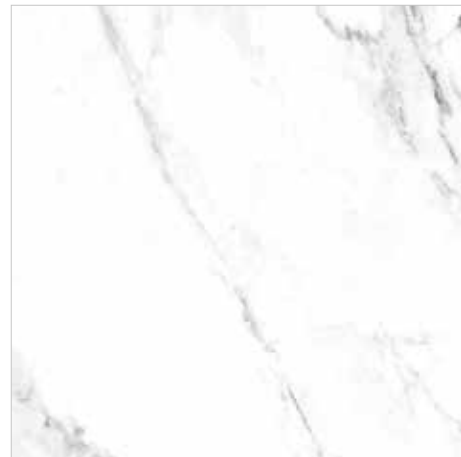
wall  
Canova - Arabescato - Polished 60x120

floor  
Canova - Arabescato 60x60



**J88476**  
60x120 (24"x48") rett./rect.

**J88516 FULL LAPPATO / POLISHED**  
60x120 (24"x48") rett./rect.



**J88492**  
60x60 (24"x24") rett./rect.

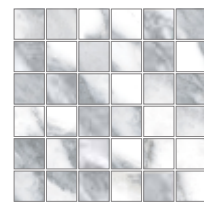
**J88886 FULL LAPPATO / POLISHED**  
60x60 (24"x24") rett./rect.



**J88508**  
30x60 (12"x24") rett./rect.

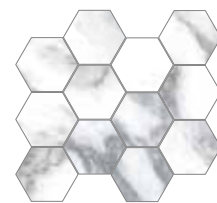
**J88892 FULL LAPPATO / POLISHED**  
30x60 (12"x24") rett./rect.

MOSAICO



**J88571**  
30x30 (12"x12")

ESAGONA



**J88576 FULL LAPPATO / POLISHED**  
35x30,3 (14"x12")



**18** 60X120

GRAFICHE DIVERSE  
DIFFERENT PATTERNS  
DIFFÉRENTS MOTIFS  
VERSCHIEDENE MUSTER

**36** 60X60

GRAFICHE DIVERSE  
DIFFERENT PATTERNS  
DIFFÉRENTS MOTIFS  
VERSCHIEDENE MUSTER

**72** 30X60

GRAFICHE DIVERSE  
DIFFERENT PATTERNS  
DIFFÉRENTS MOTIFS  
VERSCHIEDENE MUSTER



**Canova**  
Lasa White



wall  
Canova - Lasa White - Polished 30x60  
Canova - Lasa White - Esagona Polished 30x30



wall  
Canova - Lasa White - Polished 30x60  
Canova - Lasa White - Esagona Polished 30x30

floor  
Canova - Lasa White 60x120





**J88855**  
60x120 (24"x48") rett./rect.

**J88859 FULL LAPPATO / POLISHED**  
60x120 (24"x48")  
rett./rect.



**J88857**  
60x60 (24"x24") rett./rect.

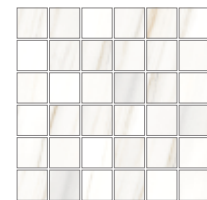
**J88889 FULL LAPPATO / POLISHED**  
60x60 (24"x24") rett./rect.



**J88858**  
30x60 (12"x24") rett./rect.

**J88895 FULL LAPPATO / POLISHED**  
30x60 (12"x24") rett./rect.

MOSAICO



**J88860**  
30x30 (12"x12")

ESAGONA



**J88861 FULL LAPPATO / POLISHED**  
35x30,3 (14"x12")



**18** 60X120

GRAFICHE DIVERSE  
DIFFERENT PATTERNS  
DIFFÉRENTS MOTIFS  
VERSCHIEDENE MUSTER

**36** 60X60

GRAFICHE DIVERSE  
DIFFERENT PATTERNS  
DIFFÉRENTS MOTIFS  
VERSCHIEDENE MUSTER

**72** 30X60

GRAFICHE DIVERSE  
DIFFERENT PATTERNS  
DIFFÉRENTS MOTIFS  
VERSCHIEDENE MUSTER

Canova  
Carnico



floor  
Canova - Carnico - Polished 60x120





floor  
Canova - Carnico - Polished 60x120



**J88475**  
60x120 (24"x48") rett./rect.

**J88515 FULL LAPPATO / POLISHED**  
60x120 (24"x48") rett./rect.



**J88491**  
60x60 (24"x24") rett./rect.

**J88887 FULL LAPPATO / POLISHED**  
60x60 (24"x24") rett./rect.



**J88507**  
30x60 (12"x24") rett./rect.

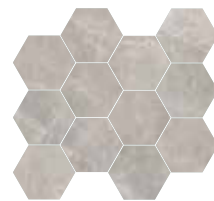
**J88893 FULL LAPPATO / POLISHED**  
30x60 (12"x24") rett./rect.

MOSAICO



**J88570**  
30x30 (12"x12")

ESAGONA



**J88575 FULL LAPPATO / POLISHED**  
35x30,3 (14"x12")



**18** 60X120

GRAFICHE DIVERSE  
DIFFERENT PATTERNS  
DIFFÉRENTS MOTIFS  
VERSCHIEDENE MUSTER

**36** 60X60

GRAFICHE DIVERSE  
DIFFERENT PATTERNS  
DIFFÉRENTS MOTIFS  
VERSCHIEDENE MUSTER

**72** 30X60

GRAFICHE DIVERSE  
DIFFERENT PATTERNS  
DIFFÉRENTS MOTIFS  
VERSCHIEDENE MUSTER



**Canova**  
Oxford Grey



wall  
Canova - Lasa White - 30x60  
Canova - Oxford Grey - 60x120

floor  
Canova - Oxford Grey - Polished - 60x120





wall  
Canova - Lasa White - 30x60  
Canova - Oxford Grey - 60x120

floor  
Canova - Oxford Grey - Polished - 60x120





**J88871**  
60x120 (24"x48") rett./rect.

**J88875 FULL LAPPATO / POLISHED**  
60x120 (24"x48")  
rett./rect.



**J88873**  
60x60 (24"x24") rett./rect.

**J88890 FULL LAPPATO / POLISHED**  
60x60 (24"x24") rett./rect.



**J88874**  
30x60 (12"x24") rett./rect.

**J88896 FULL LAPPATO / POLISHED**  
30x60 (12"x24") rett./rect.

**MOSAICO**



**J88876**  
30x30 (12"x12")

**ESAGONA**



**J88877 FULL LAPPATO / POLISHED**  
35x30,3 (14"x12")



**18** 60X120

**GRAFICHE DIVERSE**  
DIFFERENT PATTERNS  
DIFFÉRENTS MOTIFS  
VERSCHIEDENE MUSTER

**36** 60X60

**GRAFICHE DIVERSE**  
DIFFERENT PATTERNS  
DIFFÉRENTS MOTIFS  
VERSCHIEDENE MUSTER

**72** 30X60

**GRAFICHE DIVERSE**  
DIFFERENT PATTERNS  
DIFFÉRENTS MOTIFS  
VERSCHIEDENE MUSTER

			EMPERADOR	STATUARIO	ARABESCATO	CARNICO	LASA WHITE	OXFORD GREY
	60x120 rett. 24"x48" rect.	9,5 mm	J88478	J88474	J88476	J88475	J88855	J88871
	60x60 rett. 24"x24" rect.	9,5 mm	J88494	J88490	J88492	J88491	J88857	J88873
	30x60 rett. 12"x24" rect.	9,5 mm	J88510	J88506	J88508	J88507	J88858	J88874
	60x120 rett. 24"x48" rect. FULL LAPPATO POLISHED	9,5 mm	J88518	J88514	J88516	J88515	J88859	J88875
	60x60 rett. 24"x24" rect. FULL LAPPATO POLISHED	9,5 mm	J88888	J88891	J88886	J88887	J88889	J88890
	30x60 rett. 12"x24" rect. FULL LAPPATO POLISHED	9,5 mm	J88894	J88897	J88892	J88893	J88895	J88896
	Mosaico 30x30 (12"x12")	9,5 mm	J88573	J88569	J88571	J88570	J88860	J88876
	Esagona 35x30,3 (14"x12") FULL LAPPATO POLISHED	9,5 mm	J88578	J88574	J88576	J88575	J88861	J88877
	B&W Prestige 30x30 (12"x12") FULL LAPPATO POLISHED	9,5 mm	J88565	J88565	-	-	-	-
	B&W 01 30x30 (12"x12") FULL LAPPATO POLISHED	9,5 mm	J88566	J88566	-	-	-	-
	B&W 02 30x30 (12"x12") FULL LAPPATO POLISHED	9,5 mm	J88567	J88567	-	-	-	-
	B&W 03 30x30 (12"x12") FULL LAPPATO POLISHED	9,5 mm	J88568	J88568	-	-	-	-
	Battiscopa 7,5x60 (3"x24")	9,5 mm	J88583	J88579	J88581	J88580	J88862	J88878
	Gradino+Toro 33x120 (13"x48")	9,5 mm	J88593	J88589	J88591	J88590	J88864	J88880
	Angolo+Toro Dx 33x120 (13"x48")	9,5 mm	J88598	J88594	J88596	J88595	J88865	J88881
	Angolo+Toro Sx 33x120 (13"x48")	9,5 mm	J88603	J88599	J88601	J88600	J88866	J88882
	Battiscopa 7,5x60 (3"x24") FULL LAPPATO POLISHED	9,5 mm	J88588	J88584	J88586	J88585	J88863	J88879
	Gradino+Toro 33x120 (13"x48") FULL LAPPATO POLISHED	9,5 mm	J88608	J88604	J88606	J88605	J88867	J88883
	Angolo+Toro Dx 33x120 (13"x48") FULL LAPPATO POLISHED	9,5 mm	J88672	J88668	J88670	J88669	J88868	J88884
	Angolo+Toro Sx 33x120 (13"x48") FULL LAPPATO POLISHED	9,5 mm	J88677	J88673	J88675	J88674	J88869	J88885

FORMATO - SIZE		SPESS. THICKN.	PZ/BOX	M²/BOX	KG/M²	BOX/PALLET	M²/PALLET	KG/PALLET	EURO <1 PALLET	EURO >1 PALLET
	60x120 rett. 24"x48" rect.	9,5 mm	2	1,44	21,15	32	46,08	974,7	65,00/m²	56,50/m²
	60x60 rett. 24"x24" rect.	9,5 mm	3	1,08	21,10	40	43,20	911,2	60,00/m²	50,00/m²
	30x60 rett. 12"x24" rect.	9,5 mm	6	1,08	20,77	48	51,84	1077,12	56,10/m²	46,70/m²
	60x120 rett. 24"x48" rect. FULL LAPPATO POLISHED	9,5 mm	2	1,44	21,38	30	43,20	924	92,00/m²	80,00/m²
	60x60 rett. 24"x24" rect. FULL LAPPATO POLISHED	9,5 mm	3	1,08	21,38	40	43,20	924	84,00/m²	73,00/m²
	30x60 rett. 12"x24" rect. FULL LAPPATO POLISHED	9,5 mm	6	1,08	21,38	40	43,20	924	80,00/m²	69,50/m²
	Mosaico 30x30 (12"x12")	9,5 mm	6	-	-	-	-	-	122,20/m²	
	Esagona 35x30,3 (14"x12") FULL LAPPATO POLISHED	9,5 mm	6	-	-	-	-	-	225,00/m²	
	B&W Prestige 35x30,3 (14"x12") FULL LAPPATO POLISHED	9,5 mm	6	-	-	-	-	-	435,00/m²	
	B&W 01 30x30 (12"x12") FULL LAPPATO POLISHED	9,5 mm	6	-	-	-	-	-	191,00/m²	
	B&W 02 30x30 (12"x12") FULL LAPPATO POLISHED	9,5 mm	6	-	-	-	-	-	191,00/m²	
	B&W 03 30x30 (12"x12") FULL LAPPATO POLISHED	9,5 mm	6	-	-	-	-	-	191,00/m²	
	Battiscopa 7,5x60 (3"x24")	-	12	-	-	-	-	-	9,30 pz/pce	
	Gradino+Toro 33x120 (13"x48")	-	2	-	-	-	-	-	179,00 pz/pce	
	Angolo+Toro Dx 33x120 (13"x48")	-	2	-	-	-	-	-	239,00 pz/pce	
	Angolo+Toro Sx 33x120 (13"x48")	-	2	-	-	-	-	-	239,00 pz/pce	
	Battiscopa 7,5x60 (3"x24") FULL LAPPATO POLISHED	-	12	-	-	-	-	-	12,00 pz/pce	
	Gradino+Toro 33x120 (13"x48") FULL LAPPATO POLISHED	-	2	-	-	-	-	-	195,00 pz/pce	
	Angolo+Toro Dx 33x120 (13"x48") FULL LAPPATO POLISHED	-	2	-	-	-	-	-	254,00 pz/pce	
	Angolo+Toro Sx 33x120 (13"x48") FULL LAPPATO POLISHED	-	2	-	-	-	-	-	254,00 pz/pce	

Contributo spese imballo € 10,00/pal (netto). - Packing charges € 10,00/pal (net)










<0,1%	A • HA • LA A • HB • LB Full Lappato	OK	>45 N/mm²	7 6 Full Lappato	5	<150 mm²	Classe III	Classe IV	Classe V	Dcof: Wet 0,65 Pendulum: Dry >36 • Wet 25-35	










# Caratteristiche tecniche

Technical properties

CARATTERISTICA TECNICA - TECHNICAL PROPERTY CARACTERISTIQUE TECHNIQUE - TECHNISCHE DATEN	METODO DI PROVA TESTING METHOD MÉTHODE D'ESSAI PRÜFNORMEN	VALORE PRESCRITTO DELLA NORMA - REQUIRED STANDARDS VALEUR PRESCRITE PAR LES NORMES - NORMVORGABE
 Assorbimento d'acqua Water Absorption Absorption d'eau Wasseraufnahme	UNI EN ISO 10545-3	≤ 0,5%
 Resistenza a basse/alte concentrazioni di acidi/alcali Resistenza ai prodotti chimici di uso domestico e agli additivi per piscina Resistance to low/high concentrations of alkalis and acids Resistance to household chemical products and swimming pool additives Résistance à faibles/ fortes concentrations d'acides et d'alcalis Résistance aux produits chimiques à usage domestique et aux additifs pour piscine Chemikalien beständigkeit und gegen haushaltschemikalien und badewasserzusätze	UNI EN ISO 10545-13	Classe dichiarata Classe minima B  Declared class Minimum class B  Classe déclarée Minimum classification B  Angegebenen Klasse Mindestklasse B
 Resistenza alla flessione Bending Strength Résistance à la flexion Bruchlast	UNI EN ISO 10545-4	R ≥ 35 N / mm <sup>2</sup> S > 700 N (spessore < 7,5 mm) S > 1300 N (spessore ≥ 7,5 mm)
 Resistenza al gelo Frost resistance Résistance au gel Frostbeständigkeit	UNI EN ISO 10545-12	Nessun campione deve presentare rotture o alterazioni apprezzabili della superficie. Samples must not show alterations on the surface. Les échantillons ne doivent pas présenter de ruptures ou d'altérations considérables sur la surface. Die Muster nussen keine Bruch oder Schäden auf dem Oberfläche presentieren.
 Durezza di Mohs Hardness in Mohs degrees Dureté de Mohs Ritzhärte nach Mohs	UNI EN 101	≥ 5° Mohs
 Resistenza alle macchie Stain resistant Resistance aux taches Fleckbeständigkeit	UNI EN ISO 10545-14	Classe > 3 Class > 3 Classe > 3 Klasse > 3
 Resistenza all'abrasione superficiale Superficial abrasion resistance Resistance à la abrasion superficielle PEI Klassifizierung	Classificazione Interna Internal Classification System	Classi di abrasione da I a V Abrasion class from I to V Classe d'abrasion de I à V Abriebklassen I bis V
 Resistenza all'abrasione profonda Deep abrasion resistance Résistance à l'abrasion profonde Tiefenverschleiß	UNI EN ISO 10545-6	≤ 175 mm <sup>3</sup>
 Resistenza allo scivolamento (coefficiente di attrito) Slip resistance (coefficient of friction) Résistance au glissement (coefficient de friction) Rutschfestigkeit (Reibungskoeffizient)	DIN 51130 DIN 51097  B.C.R.A. Rep. CEC/81  Dcof ANSI A137.1:2012  BS 7976-2 (pendulum)	Valore dichiarato Declared value Valeur déclarée Wertangabe          μ > 0,40          0-24 Scivoloso Slippery Glissant Rutschig 25-35 Scivolosità moderata Moderately slippery Glissance modérée Großer Haftriebwert >36 Basso rischio scivolamento Low slipping risk Risque de glissement faible Sehr Großer Haftriebwert

# Caratteristiche tecniche

Technical properties

CARATTERISTICA TECNICA - TECHNICAL PROPERTY CARACTERISTIQUE TECHNIQUE - TECHNISCHE DATEN	METODO DI PROVA TESTING METHOD MÉTHODE D'ESSAI PRÜFNORMEN	VALORE PRESCRITTO DELLA NORMA - REQUIRED STANDARDS VALEUR PRESCRITES PAR LES NORMES - NORMVORGABE			
		N < 7 cm (mm)	7 cm ≤ N < 15 cm (mm)	N ≥ 15 cm (%) (mm)	
 Lunghezza e larghezza Length and width Longueur et largeur Länge und Breite	ISO 10545-2	± 0,5 (*)	± 0,9 (*)	± 0,6 (*)	± 2,0 (*)
 Spessore Thickness Épaisseur Dicke		± 0,5 (**)	± 0,5 (**)	± 5 (**)	± 0,5 (**)
 Rettilinearità degli spigoli Straightness of sides Rectitude des bords Geradheit der kanten		n.a. (***)	± 0,75 (***)	± 0,5 (***)	± 1,5 (***)
 Ortogonalità Squareness Rectangularité Rechtwinkligkeit		n.a. (****)	± 0,75 (****)	± 0,5 (****)	± 2,0 (****)
 Planarità Planarity Planéité de surface Ebenflächigkeit		c.c. / n.a. e.c. / n.a. w. / n.a.	c.c. ± 0,75 e.c. ± 0,75 w. ± 0,75	c.c. ± 0,5 e.c. ± 0,5 w. ± 0,5	c.c. ± 2,0 e.c. ± 2,0 w. ± 2,0

(\*) Deviazione ammissibile, in % oppure mm, della dimensione media di ogni piastrella (2 oppure 4 lati) dalla dimensione di fabbricazione (W).  
(\* The permissible deviation, in % or mm, of the average size for each tile (2 or 4 sides) from work size (W).  
(\*) Écart admissible, en % ou en mm, de la taille moyenne de chaque carreau (2 ou 4 faces) par rapport à la dimension de fabrication (W).  
(\* Zulässige Abweichung der durchschnittlichen Größe jeder Fliese (2 oder 4 Seiten) in % oder mm vom Herstellungsmaß (W).

(\*\*) Deviazione ammissibile, in % oppure mm, dello spessore medio di ogni piastrella dallo spessore riportato nella dimensione di fabbricazione (W).  
(\*\* The permissible deviation, in % or mm, of the average thickness for each tile from the corresponding work size (W).  
(\*\*) Écart admissible, en % ou en mm, de l'épaisseur moyenne de chaque carreau par rapport à l'épaisseur indiquée dans la dimension de fabrication (W).  
(\*\* Zulässige Abweichung der durchschnittlichen Dicke jeder Fliese in % oder mm von der in der Herstellungsabmessung (W) angegebenen Dicke.

(\*\*\*) Deviazione massima ammissibile di rettilinearità, in % oppure mm, in rapporto alle dimensioni di fabbricazione (W) corrispondenti.  
(\*\*\* The maximum permissible deviation from straightness, in % or mm, related to the corresponding work sizes (W).  
(\*\*\* Écart de rectitude maximum admissible, en % ou en mm, par rapport aux dimensions de fabrication (W) correspondantes.  
(\*\*\* Maximal zulässige Geradheitsabweichung in % oder mm in Bezug auf die entsprechenden Fertigungsabmessungen (W).

(\*\*\*\*) Deviazione massima ammissibile di ortogonalità, in % oppure mm, in rapporto alle dimensioni di fabbricazione (W) corrispondenti.  
(\*\*\*\* The maximum permissible deviation from rectangularity, in % or mm, related to the corresponding work size (W).  
(\*\*\*\* Écart d'orthogonalité maximum admissible, en % ou en mm, par rapport aux dimensions de fabrication (W) correspondantes.  
(\*\*\*\* Maximal zulässige Abweichung der Orthogonalität in % oder in mm in Bezug auf die entsprechenden Herstellungsabmessungen (W).

c.c. Deviazione massima ammissibile della curvatura del centro, in % oppure mm, in rapporto alla diagonale calcolata secondo le dimensioni di fabbricazione (W).  
c.c. The maximum permissible deviation from centre curvature, in % or mm, related to the corresponding work sizes (W).  
c.c. Écart maximum admissible de la courbure du centre, en % ou en mm, par rapport à la diagonale calculée en fonction des dimensions de fabrication (W).  
c.c. Maximal zulässige Abweichung der Krümmung des Mittelpunkts in % oder mm in Bezug auf die Diagonale, berechnet nach den Herstellungsmaßen (W).

e.c. Deviazione massima ammissibile della curvatura dello spigolo, in % oppure mm, in rapporto alle dimensioni di fabbricazione (W).  
e.c. The maximum permissible deviation from edge curvature, in % or mm, related to the corresponding work sizes (W).  
e.c. Écart maximum admissible de la courbure du coin, en % ou en mm, par rapport aux dimensions de fabrication (W).  
e.c. Maximal zulässige Abweichung der Krümmung der Ecke in % oder mm von den Herstellungsmaßen (W).

w. Deviazione massima ammissibile dello svergolamento, in % o mm, in rapporto alla diagonale calcolata secondo le dimensioni di fabbricazione (W).  
w. The maximum permissible deviation from warpage, in % or mm, related to diagonal calculated from the work size (W).  
w. Écart de gauchissement maximum admissible, en % ou en mm, par rapport à la diagonale calculé en fonction des dimensions de fabrication (W).  
w. Maximal zulässige Verzugsabweichung in % oder mm in Bezug auf die Diagonale, berechnet nach den Abmessungen von Herstellung (W).

Le caratteristiche tecniche indicate nei cataloghi di linea e nel Catalogo Generale, e in qualsiasi documento di promozione commerciale di ITALCER S.p.A., hanno lo scopo di dare un'indicazione dei valori riscontrati nei vari lotti e nelle varie tonalità del prodotto, pertanto differenze rispetto a tali valori indicativi non possono essere oggetto di contestazione.

All technical features stated in leaflets, in master brochure and in merchandising of ITALCER S.p.A. are meant to be an indication of an average of figures recorded within a span determined by international law) in several production runs, therefore a slight discrepancy in quality figures of a certain batch in relation to these figures cannot be considered a production failure.

Les caractéristiques techniques mentionnées dans les catalogues de ligne et dans le catalogue général et dans tous les documents de promotion commerciale de ITALCER S.p.A. ont le but de fournir une indications des valeurs rencontrés dans les différents lots et dans les différentes tonalités du produit et donc les différences par rapport à ces valeurs indicatives ne peuvent pas faire l'objet des réclamations.

Die in den Linienkatalogen und im Gesamtkatalog sowie in den Werbedokumenten für ITALCER S.p.A. angegebenen technischen Merkmale sollen einen Hinweis auf die Werte geben, die in den verschiedenen Chargen und in den verschiedenen Produktfarben gefunden wurden, weshalb sich diese unterschiedlichen Richtwerte können nicht bestritten werden.



## LA CERAMICA. UNA SCELTA SICURA.



### SICURA SAFE

La ceramica è un materiale sicuro, che viene dalla terra, quindi naturale, non contiene plastica ed è completamente riciclabile.

*Ceramic is a safe, natural material that originates from the earth. It does not contain plastic and is completely recyclable.*



### IGIENICA HYGIENIC

La ceramica è uno dei materiali più igienici, non fa odore, si pulisce facilmente con tutti i prodotti per la pulizia della casa.

*Ceramic is one of the most hygienic of all materials. It's odourless and easy to clean using any household detergent.*

## CERAMIC. A SAFE CHOICE.



### RESISTENTE RESISTANT

La ceramica è un materiale forte perché non si deforma, non gela e resiste ai detergenti chimici più aggressivi.

*Ceramic is a strong material that does not change shape or freeze and is resistant to even the most aggressive chemical detergents.*



### VERSATILE VERSATILE

La ceramica - con la sua infinita varietà di formati e superfici - è adatta per ogni ambiente, ideale per pavimenti e pareti, per piani di lavoro e tavoli.

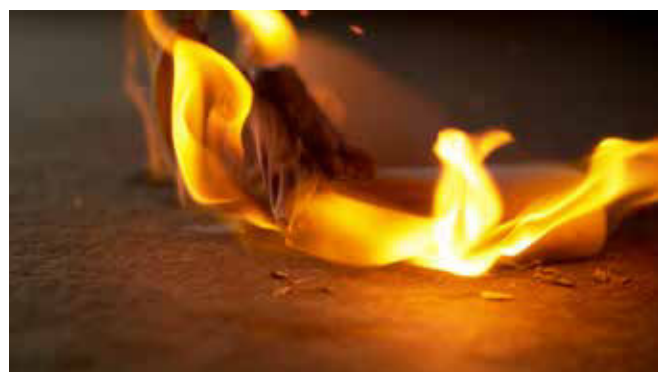
*With its infinite variety of sizes and surfaces, ceramic is suitable for any application, whether floors or walls, countertops or tables.*



### DURA A LUNGO LONG-LASTING

La ceramica è un materiale duraturo, inalterabile, si pulisce facilmente ed è sempre come nuovo anche col passare del tempo.

*Ceramic is a durable and hard-wearing material. It's easy to clean and always looks as good as new.*



### NON BRUCIA IT DOES NOT BURN

La ceramica è un materiale sicuro, che viene dalla terra, quindi naturale, non contiene plastica ed è completamente riciclabile.

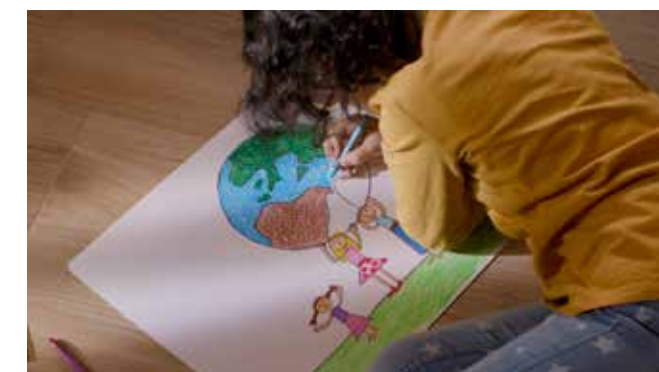
*It does not burn and in the event of fire does not release substances that are harmful to people or the environment.*



### STABILE STABLE

Un pavimento in ceramica è pratico e stabile e si posa facilmente nei negozi, nei ristoranti, negli uffici e in ogni tipo di locale.

*A ceramic floor is practical, stable and can be easily skillfully installed in shops, restaurants, offices and surfaces of all kinds.*



### AMA L'AMBIENTE ENVIRONMENT-FRIENDLY

La ceramica è un materiale sostenibile che rispetta l'ambiente e la salute perché è prodotta in conformità con tutte le normative europee.

*Ceramic is a sustainable material that is healthy and environment-friendly because it is produced in full compliance with European and American standards.*

# Indice di variazione

Variation index



Piastrella uniforme  
Tiles with uniform appearance  
Carreaux avec une apparence uniforme  
Einheitliche fliese



Piastrella con leggera variazione di tono e grafica  
Tiles with slight shade and graphic variation  
Carreaux avec faible différence de nuance et structure  
Fliese mit einer leichten Abänderung des tons und grafik



Piastrella con discreta variazione di tono e grafica  
Tiles with moderate shade and graphic variation  
Carreaux avec moderate différence de nuance et structure  
Fliese mit einer moderat Abänderung des tons und grafik



Piastrella con notevole variazione di tono e grafica  
Tiles with huge variation of shade and graphic  
Carreaux avec une considerable difference de nuance et structure  
Fliese mit einer beträchtlich Abänderung des tons und der grafik.

# Legenda

Legend



Piastrelle indicate per pavimenti  
Tiles specifically used for floors  
Carreaux pour carrelages de sol  
Bodenfliesen



Piastrelle indicate per rivestimenti interni  
Tiles specifically used for wall coverings  
Carreaux pour faïences  
Wandfliesen für den Innenbereich



Piastrelle indicate per abitazioni residenziali  
Tiles for dwelling houses  
Carreaux pour habitations résidentielles  
Fliesen für den Wohnbereich



Piastrelle particolarmente indicate per l'esterno  
Tiles especially suitable for outdoor applications  
Carreaux particulièrement indiqués pour application à l'extérieur  
Besonders für Aussenbereiche geeignete Fliesen



Piastrelle indicate per luoghi pubblici a traffico leggero  
Tiles suitable for low traffic public and commercial areas  
Carreaux recommandés pour lieux publics et commerciaux à piétinement léger  
Für Bodenbeläge in Bereichen mit gewöhnlicher Begehungsfrequenz und Schleifschmutz



Piastrelle indicate per luoghi pubblici a traffico pesante  
Tiles suitable for heavy traffic public and commercial areas  
Carreaux recommandés pour lieux publics et commerciaux à piétinement lourd  
Fliesen für Bereiche, die starker Begehung ausgesetzt sind



A company part of:

ITALCER GROUP



UNI EN ISO 9001:2015  
UNI EN ISO 14001:2015  
UNI CEI EN ISO 50001:2011

SISTEMI DI GESTIONE  
CERTIFICATI

Ceramica Rondine

Ceramics of Italy





ITALCER S.p.A.  
Via Emilia Ovest 53/A - 42048 Rubiera (RE) - Italy  
Tel. +39 0522 625111 - Fax +39 0522 625160  
P. IVA 00142060359

